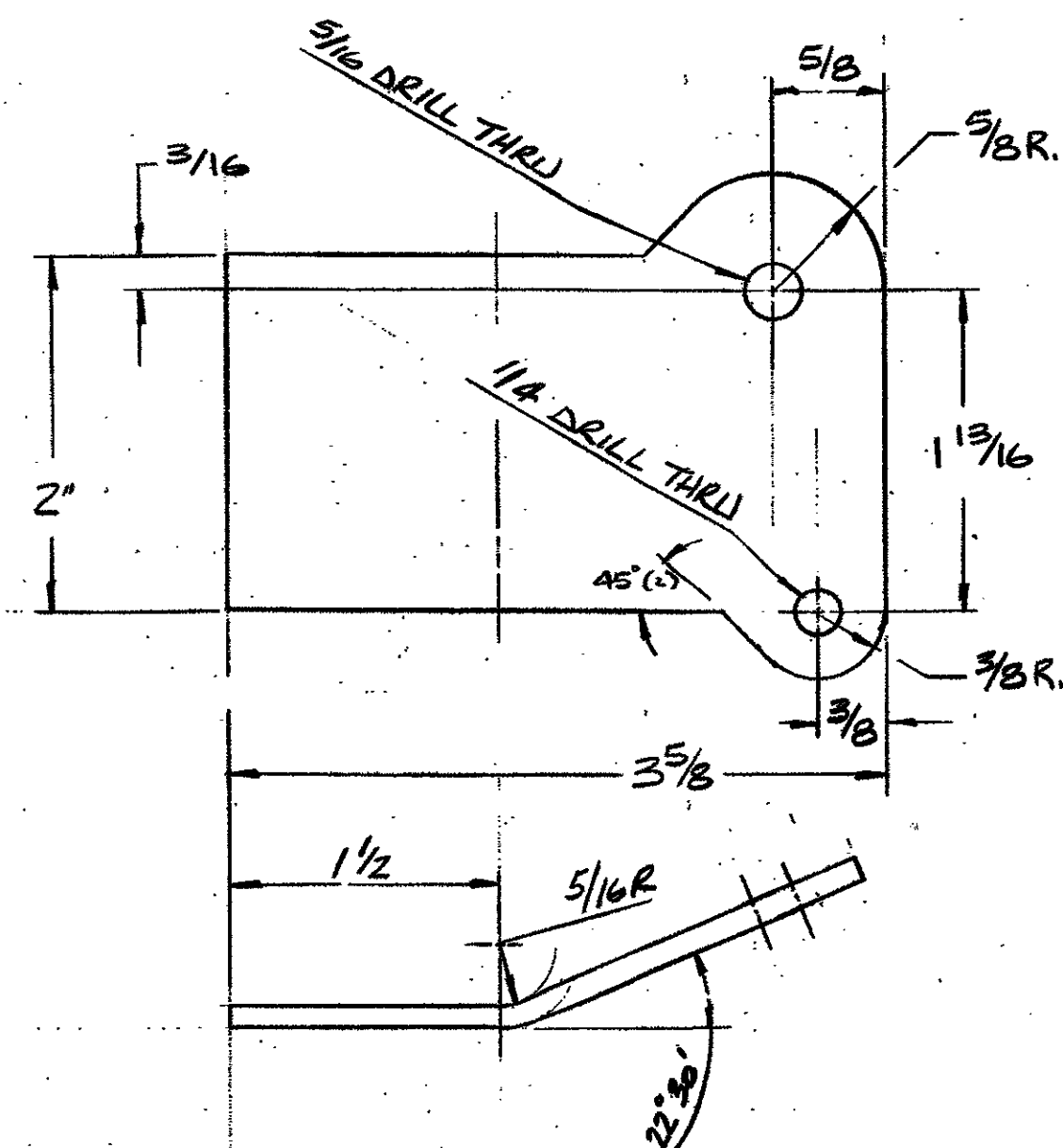
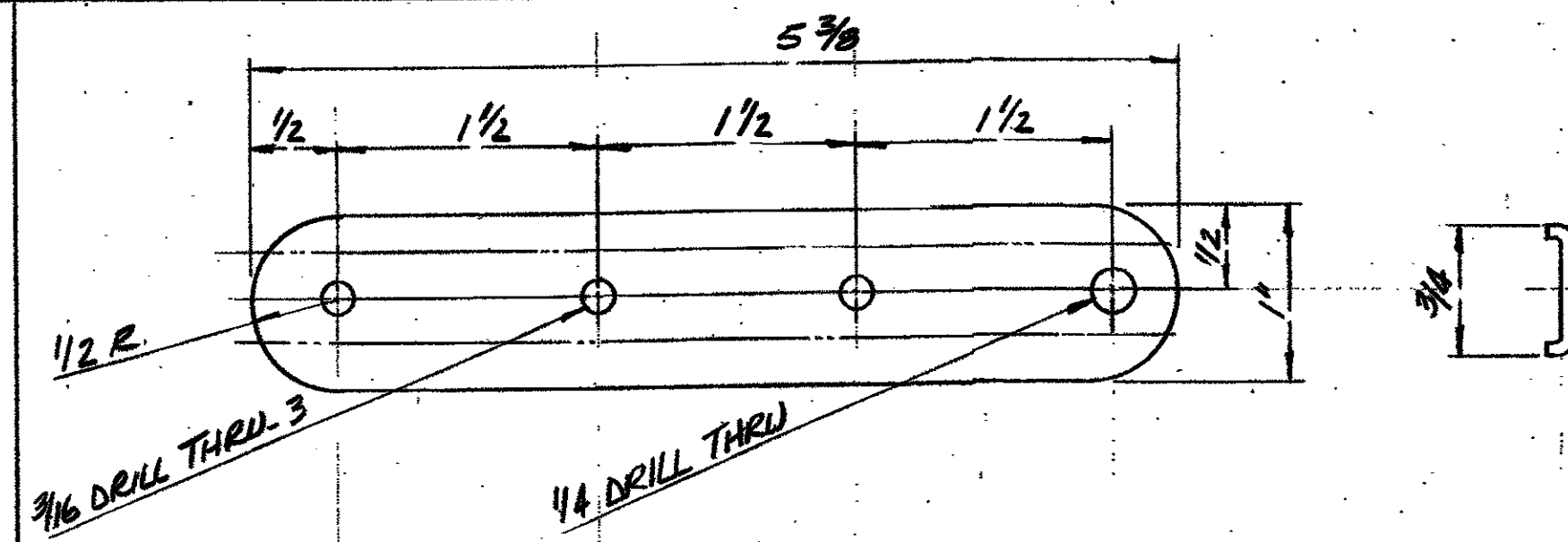


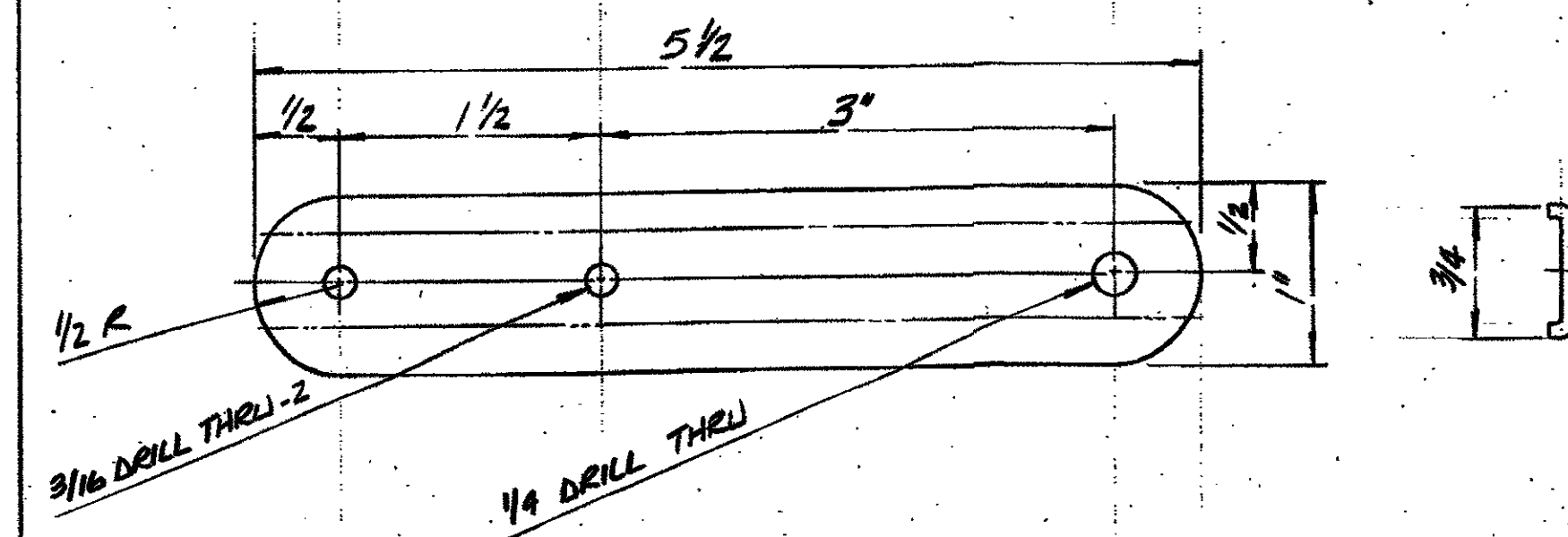
N3 LLSB LEFT LOWER STRUT BRACKET
ONE REQ'D
OPPOSITE FROM RIGHT BRACKET



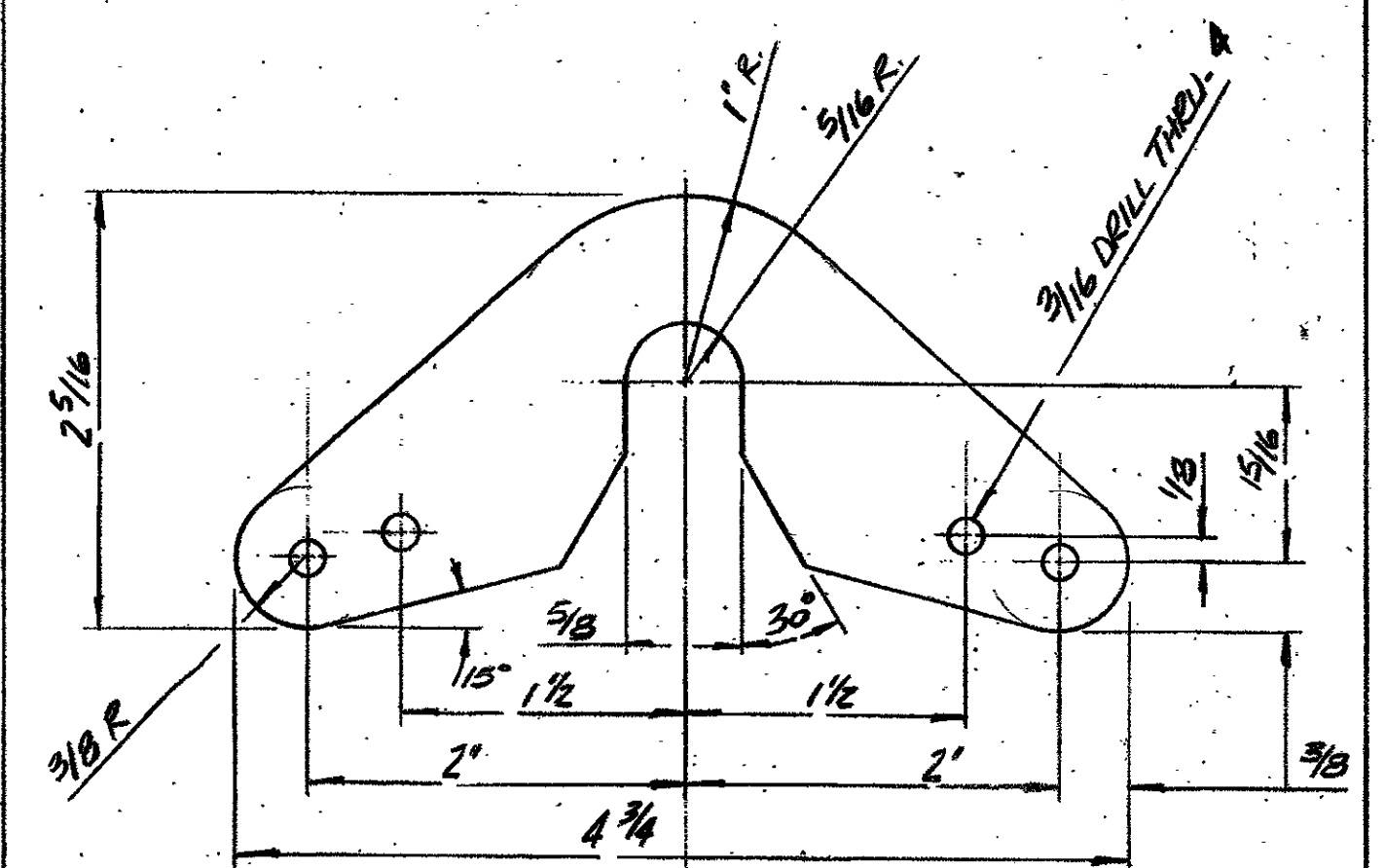
N3 RLSB RIGHT LOWER STRUT BRACKET
ONE REQ'D
MAT'L 4130 .125 THICK



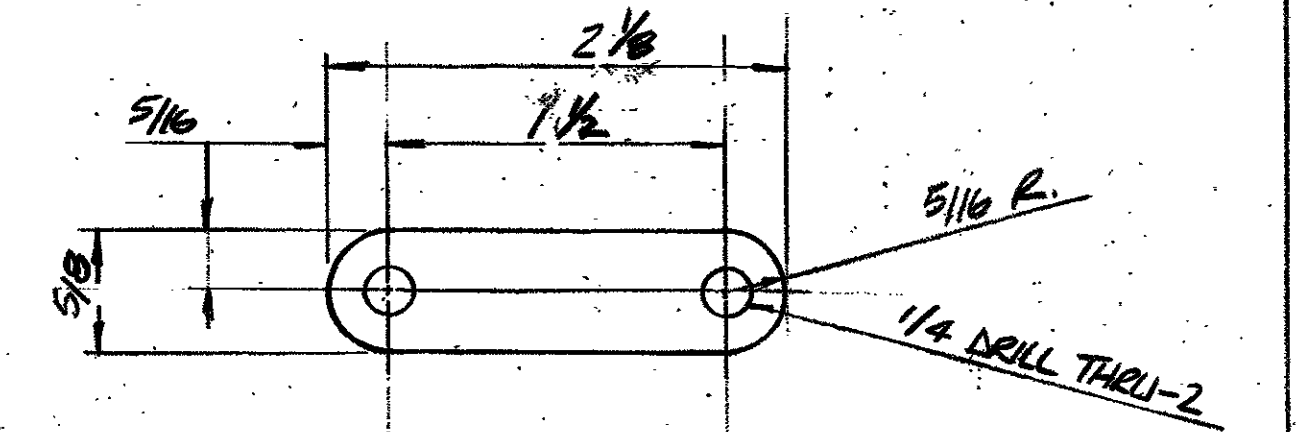
N3 MSAB MAIN SPAR ATTACH BRACKET
FOUR REQ'D
MAT'L 4130 .063 THICK



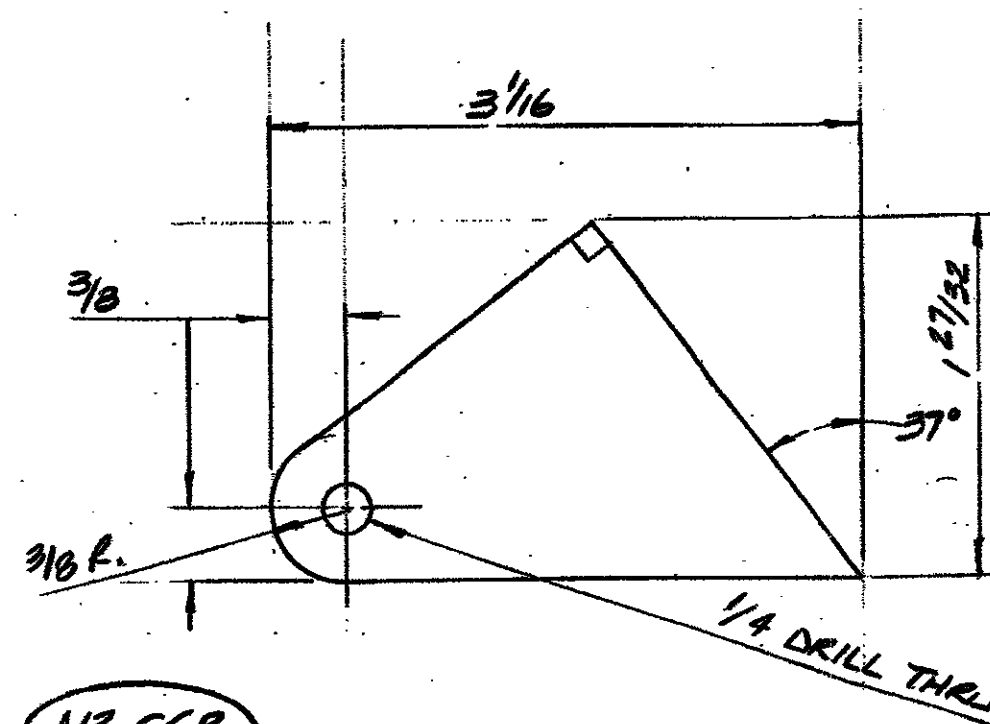
N3 RSAB REAR SPAR ATTACH BRACKET
FOUR REQ'D
MAT'L 4130 .063 THICK



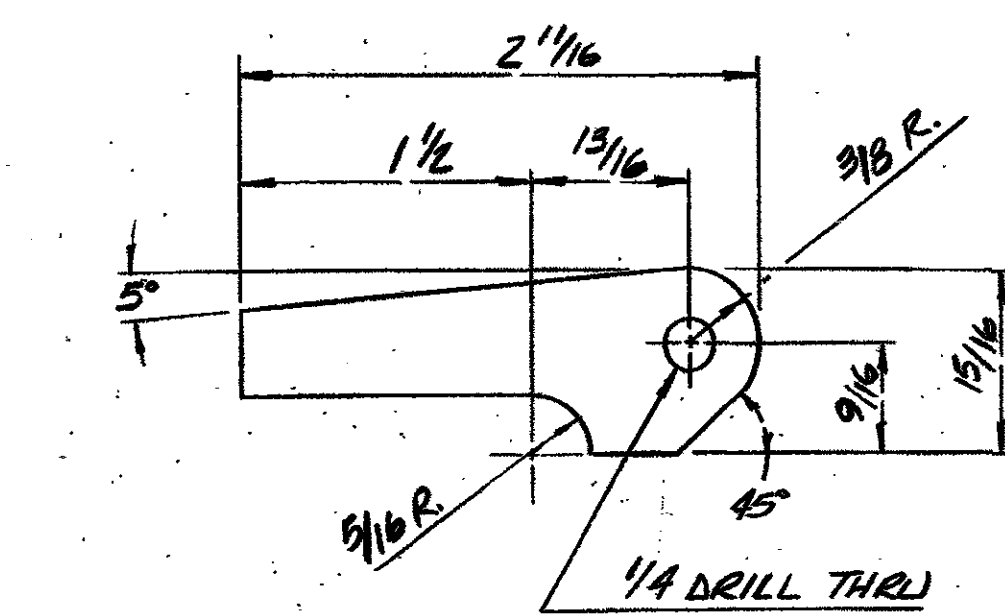
N3 ECH ELEVATOR CONTROL HORN
ONE REQ'D
MAT'L 4130 .063 THICK



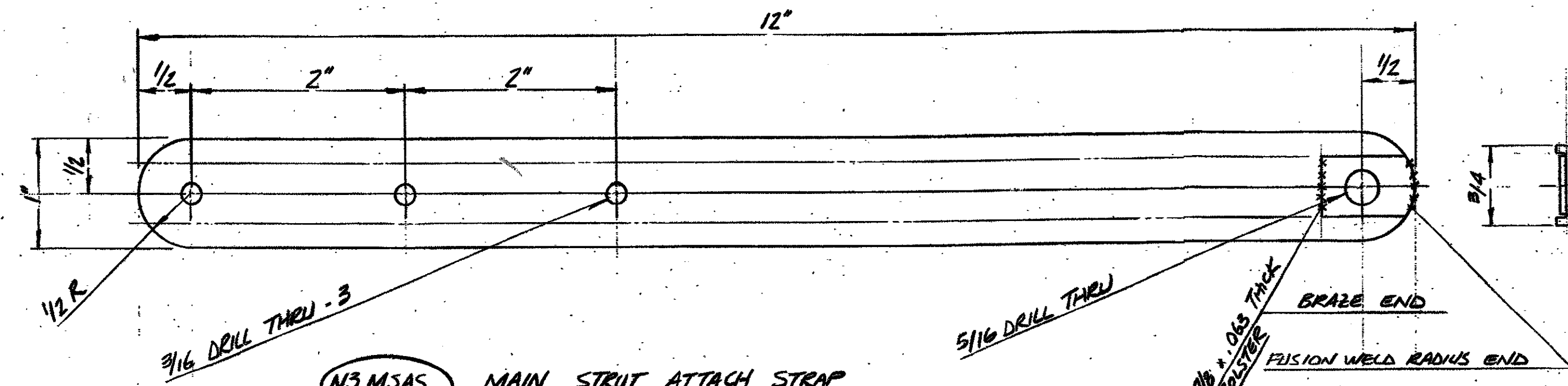
N3 ATB AFT TAILSPRING BRACKET
TWO REQ'D
MAT'L 4130 .080 THICK



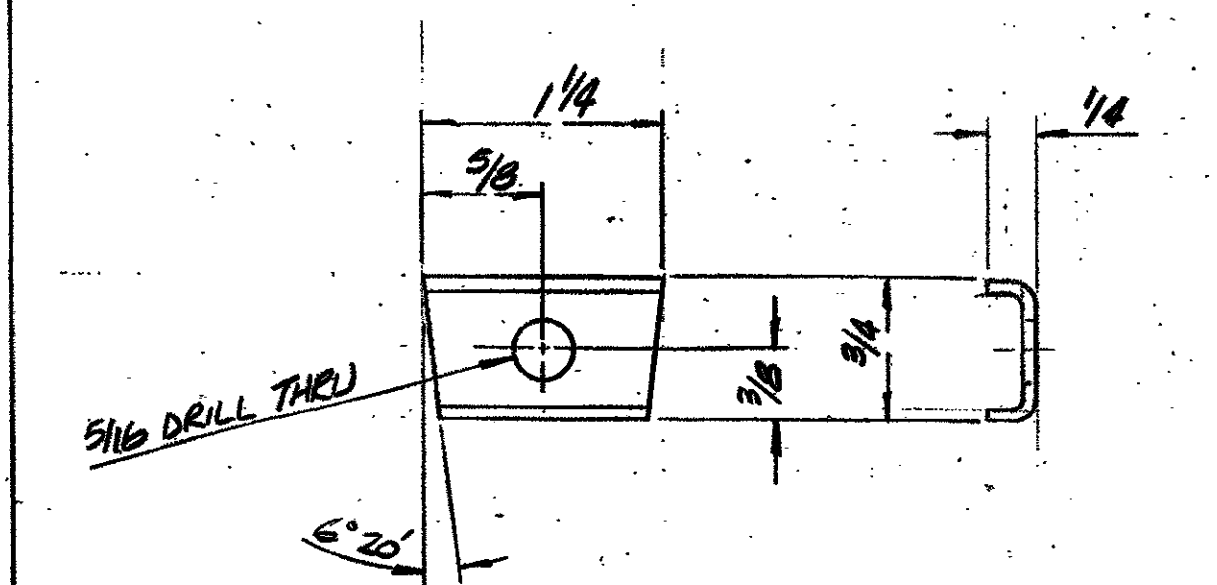
N3 SGB SPREADER GEAR BRACKET
FOUR REQ'D
MAT'L 4130 .080 THICK



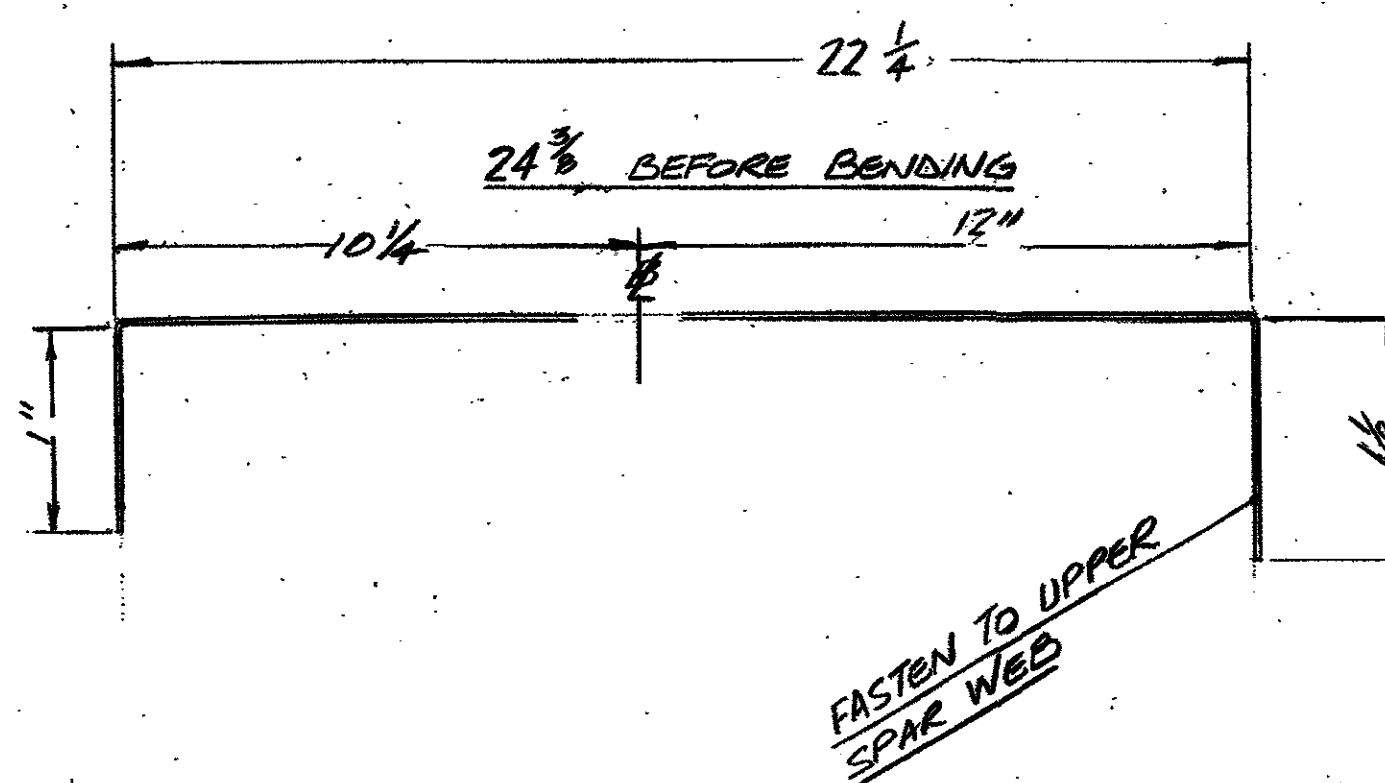
N3 GABR GEAR ATTACH BRACKET REAR
EIGHT REQ'D
MAT'L 4130 .080 THICK



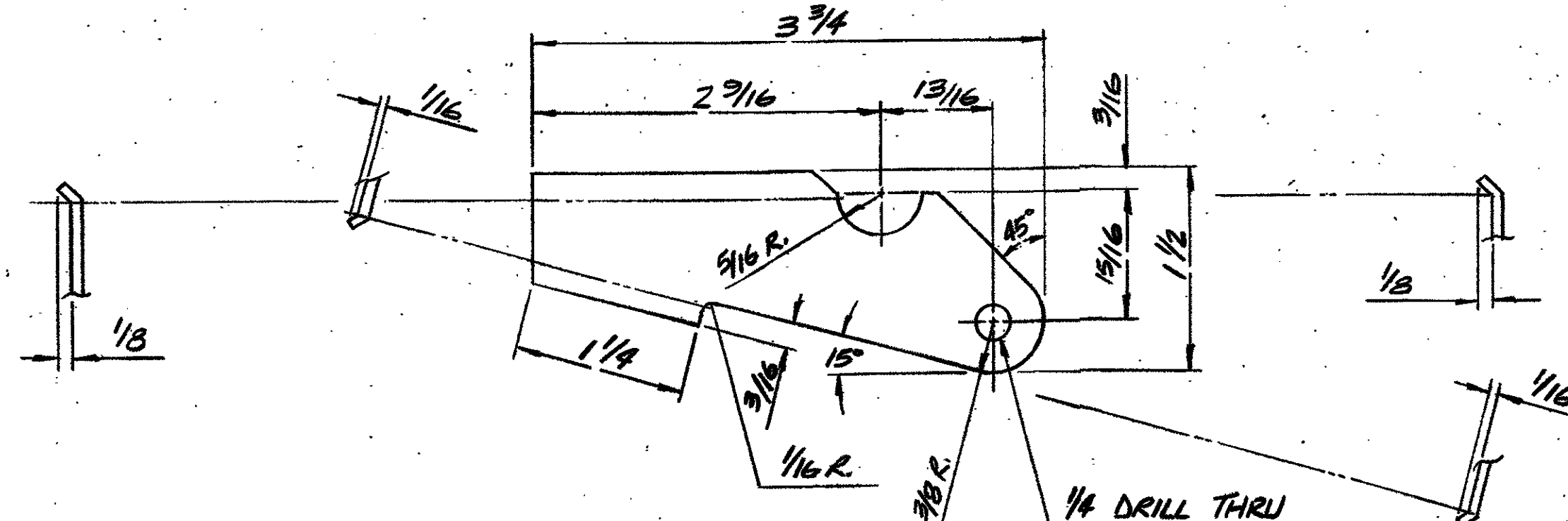
N3 MSAS MAIN STRUT ATTACH STRAP
FOUR REQ'D
MAT'L 4130 .063 THICK



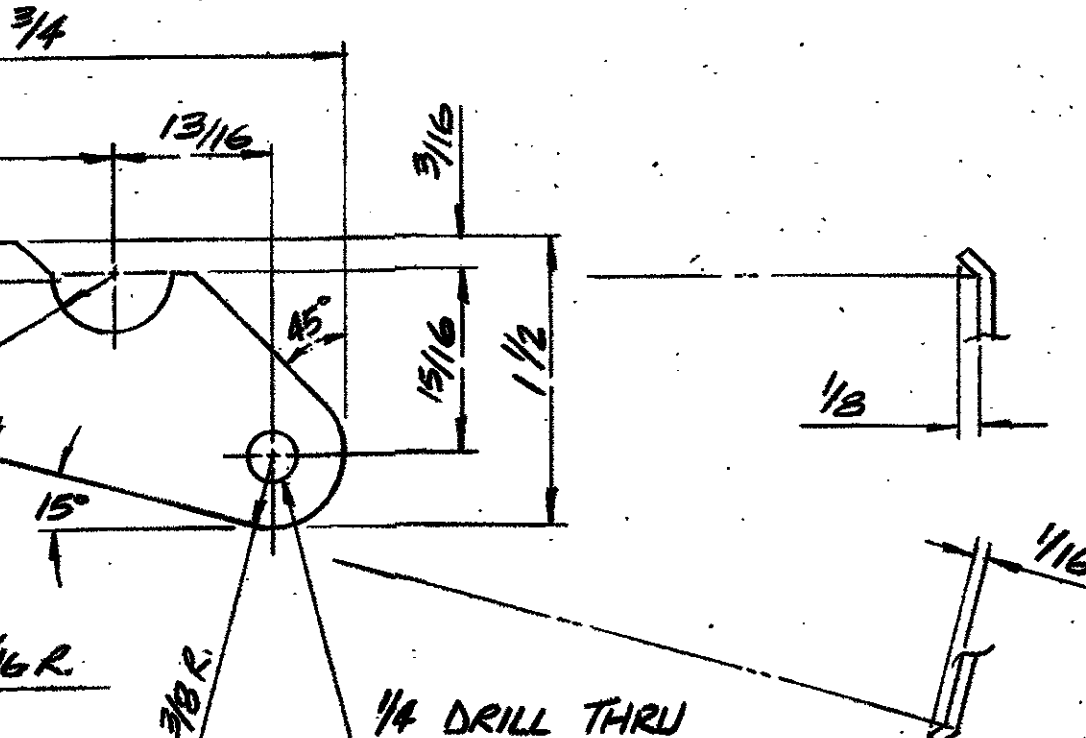
N3 FTC FORWARD TAILSPRING CHANNEL
ONE REQ'D
MAT'L 4130 .063 THICK



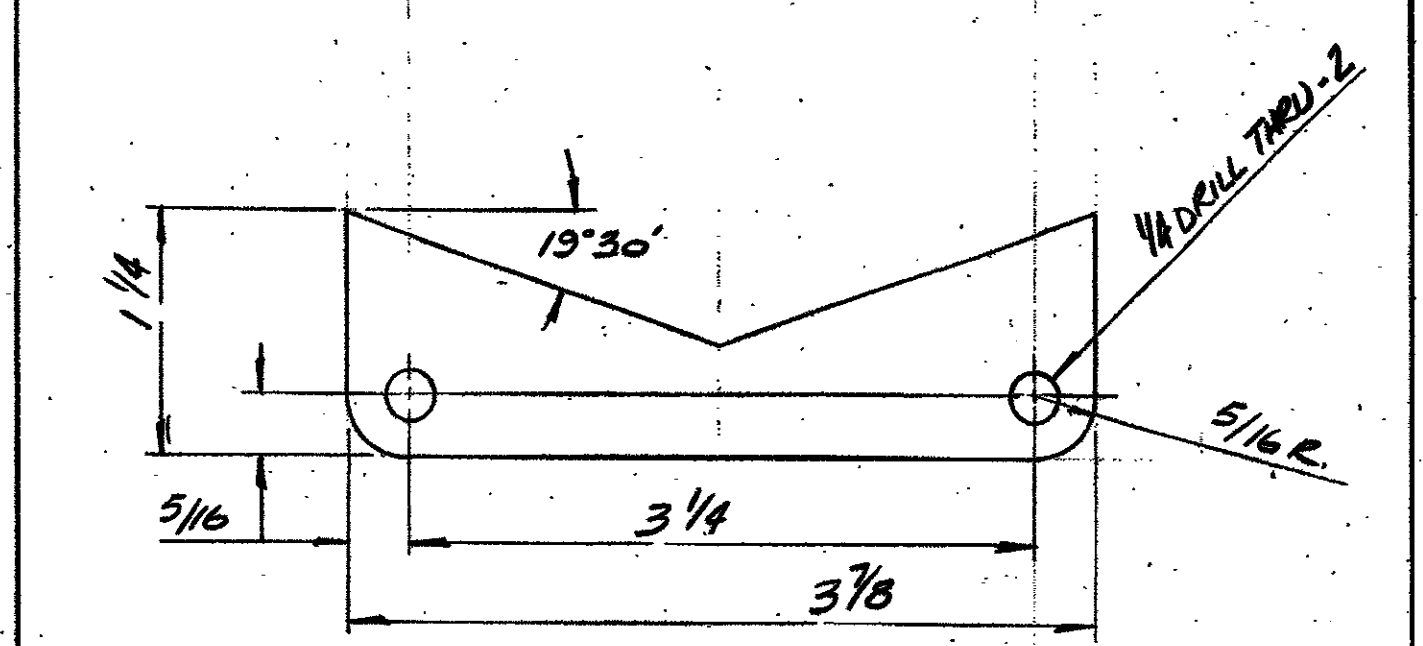
N3 DLE "D" CELL LEADING EDGE
28' REQ'D
MAT'L 2024-T3 ALCLAD 4' LENGTHS



N3 GABFR GEAR ATTACH BRACKET FRONT R.H.
TWO REQ'D
MAT'L 4130 .090 THICK



N3 GABFL GEAR ATTACH BRACKET FRONT L.H.
TWO REQ'D
MAT'L 4130 .090 THICK



N3 SBAB SPREADER BAR ATTACH BRACKET
TWO REQ'D
MAT'L 4130 .080 THICK

Preceptor Aircraft
1230 Shepard Street
Hendersonville, USA
North Carolina 28792
704.697.8284
FAX 696.3739

NAME: ULTRAPUP			
FITTINGS			
DRAWN BY: K	DATE: 10/85	CHECKED BY:	DATE: 10/85
PART NO.	ISSUE: REV:		
N3-4-2P			