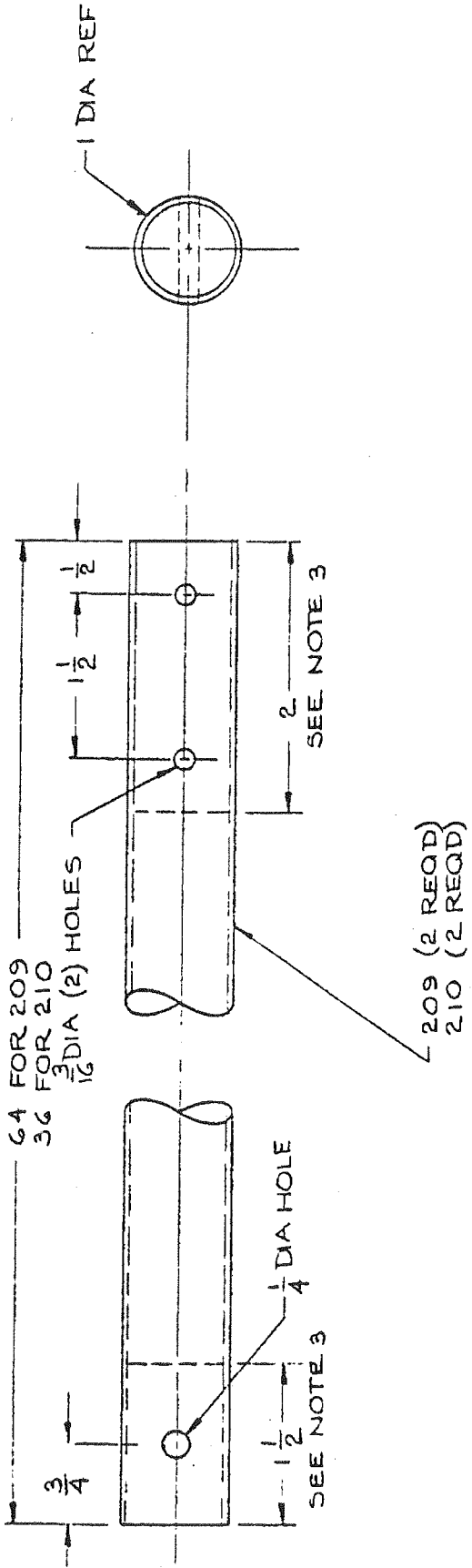


NOTES:

- 1. MATL: 1 OD X .063 WALL 6061-T6 ALUM TUBE
- 2. QTY REQD: 2 EA OF 209 & 210
- 3. FILL ENDS WITH DRY MICRO OR OTHER HARD SUBSTANCE TO PREVENT COLLAPSE OF TUBE WHEN BOLTS TIGHTENED.



COPYRIGHT © 1988 TEXAS AIRCRAFT

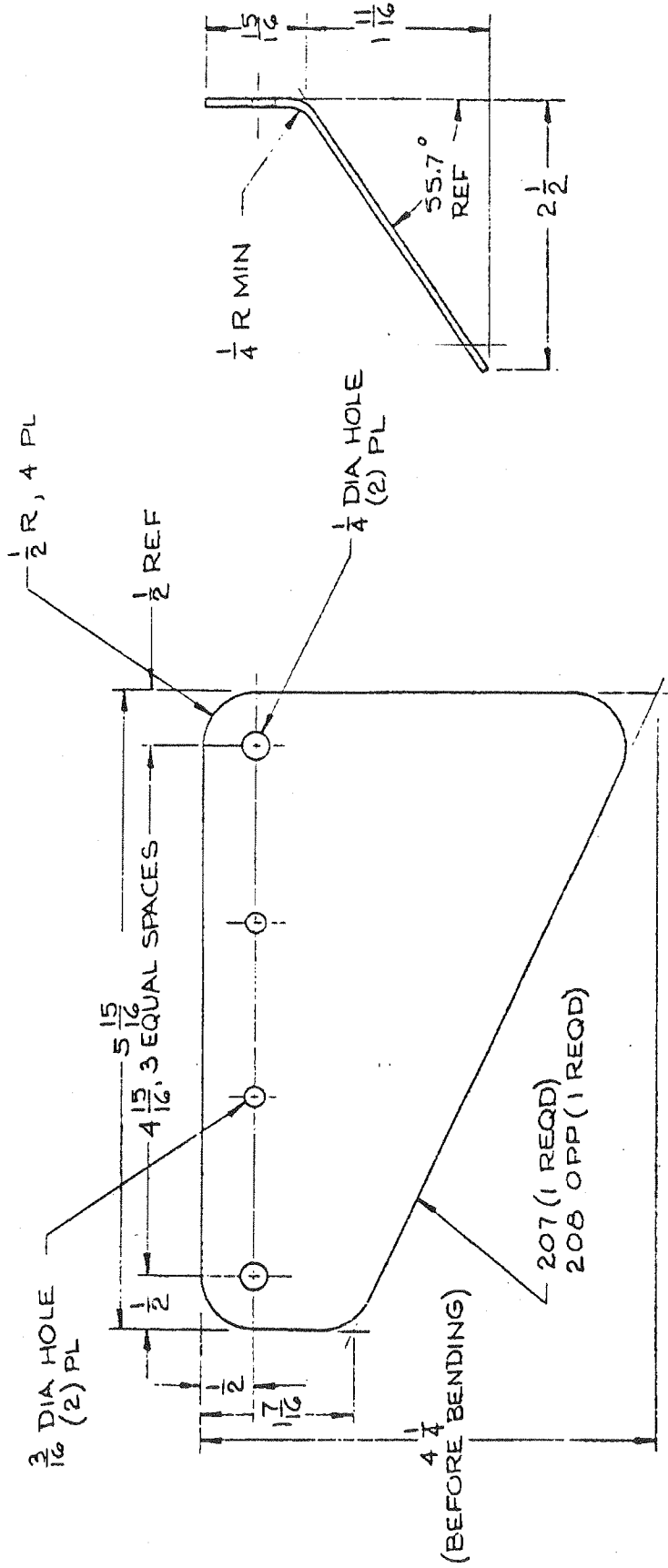
LDG GEAR STRUT

SCALE 1/1

RCT 3-10-80

NOTES:

1. MATL: .063, 2024-T3 ALUM
2. QUANTITY: (1) PAIR (1 EA, 207 & 208)
3. HOLES TO MATCH 006 GUSSET



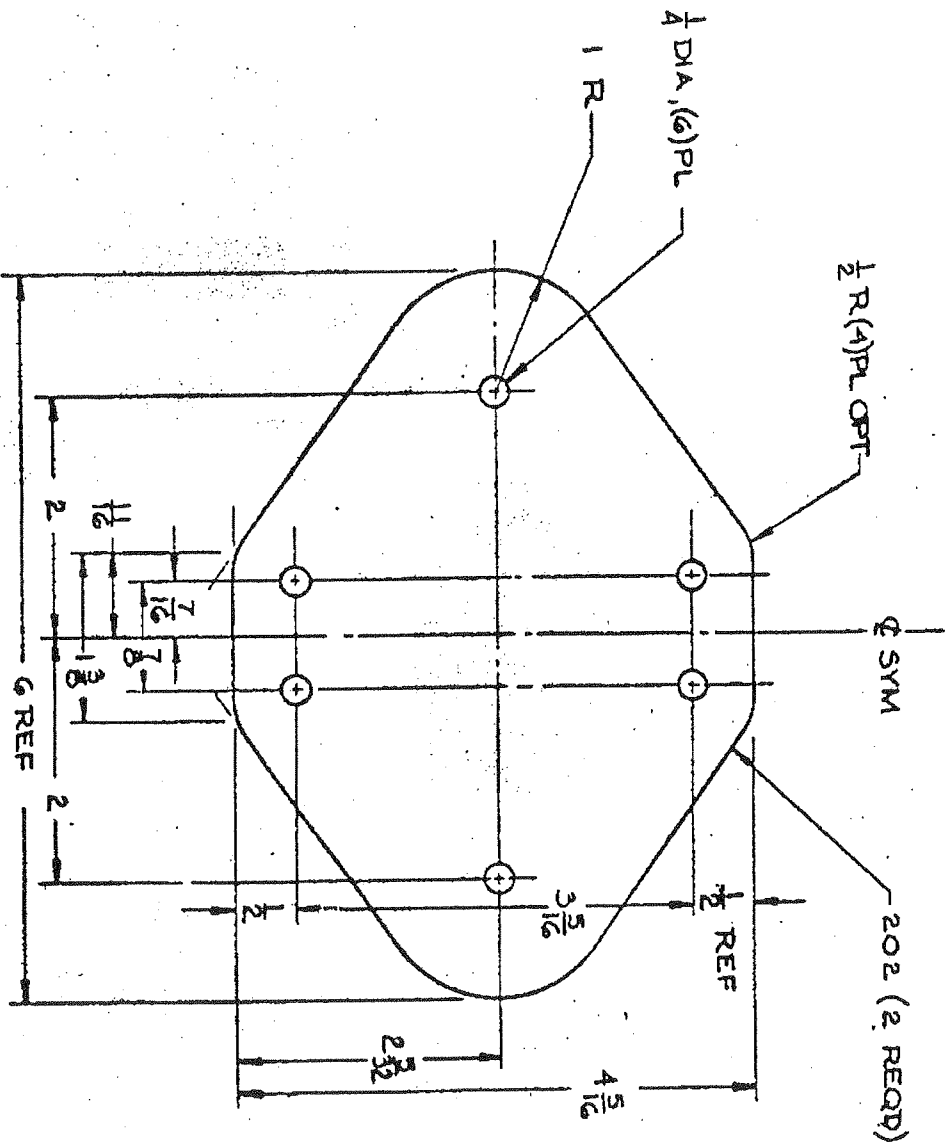
COPYRIGHT © 1990 TRIMAN AIRCRAFT

LDG GEAR SUPT BRKT

SCALE 1/1

RCT 3-10-80

- NOTES:
 1. MATL: .090 (.125 OPT) 2024-T3 ALUM
 2. QUANTITY: (2) EA

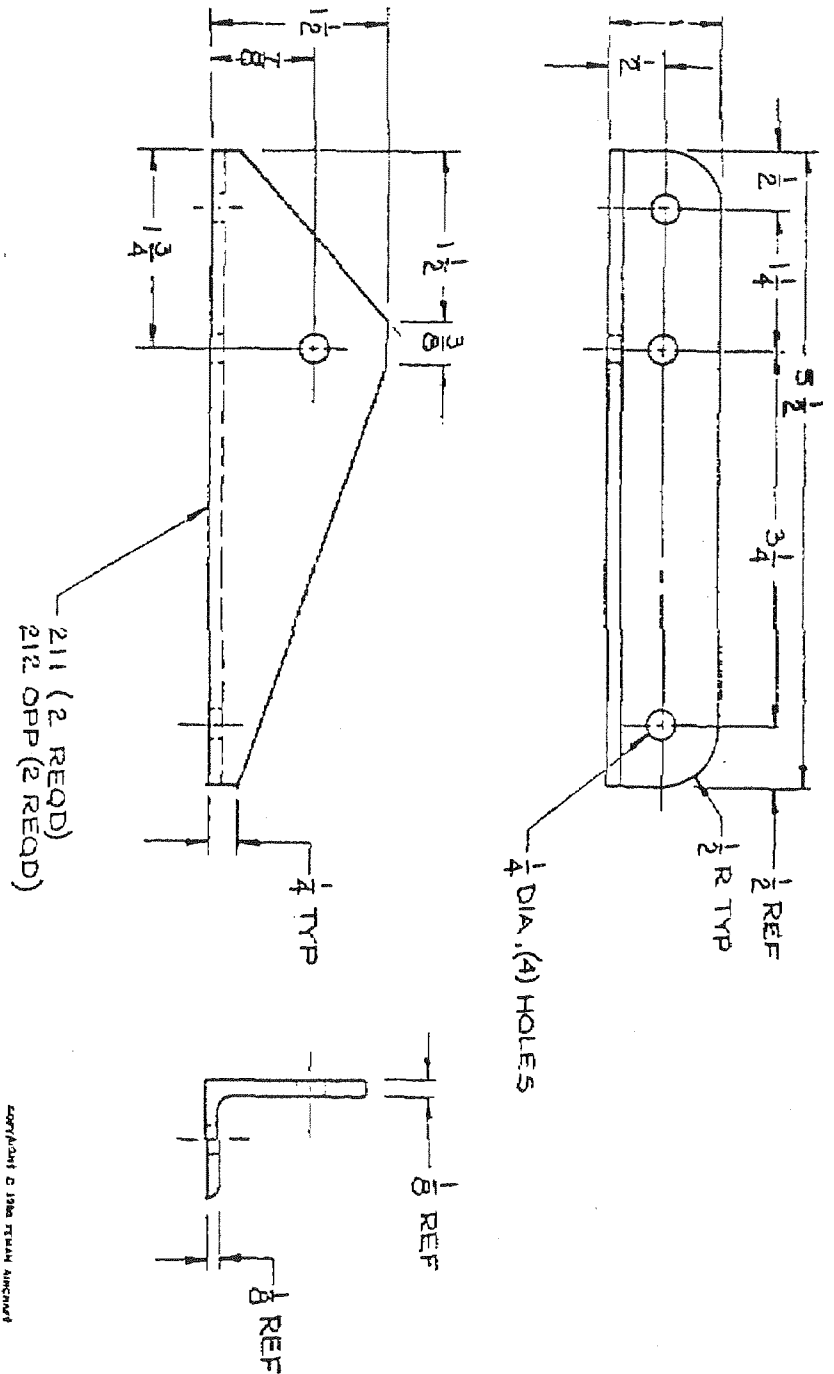


AXLE SUPT BRKT
 SCALE 1/1
 RCT 3-4-80

COMPONENT 0 1770 ITEM 49 ANCHOR

150
 50

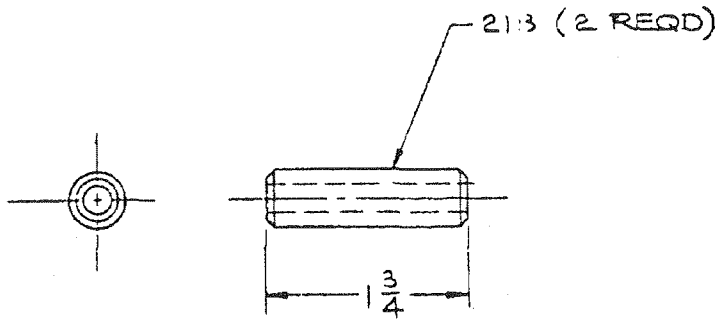
- NOTES:
1. MATL : .125 X 1 X 2 ALUM ANGLE, 6061-T6
 2. QUANTITY : (2) PAIR (2 EA, 211 & 212)
 3. ROUNDED CORNERS OPTIONAL



LDG GEAR BASE
 SCALE 1/1
 RCT 3-15-80

NOTES:

1. MATL: USE SAME MATL AS USED FOR 009 FRAME SPACER
2. QTY REQD: 2 EA

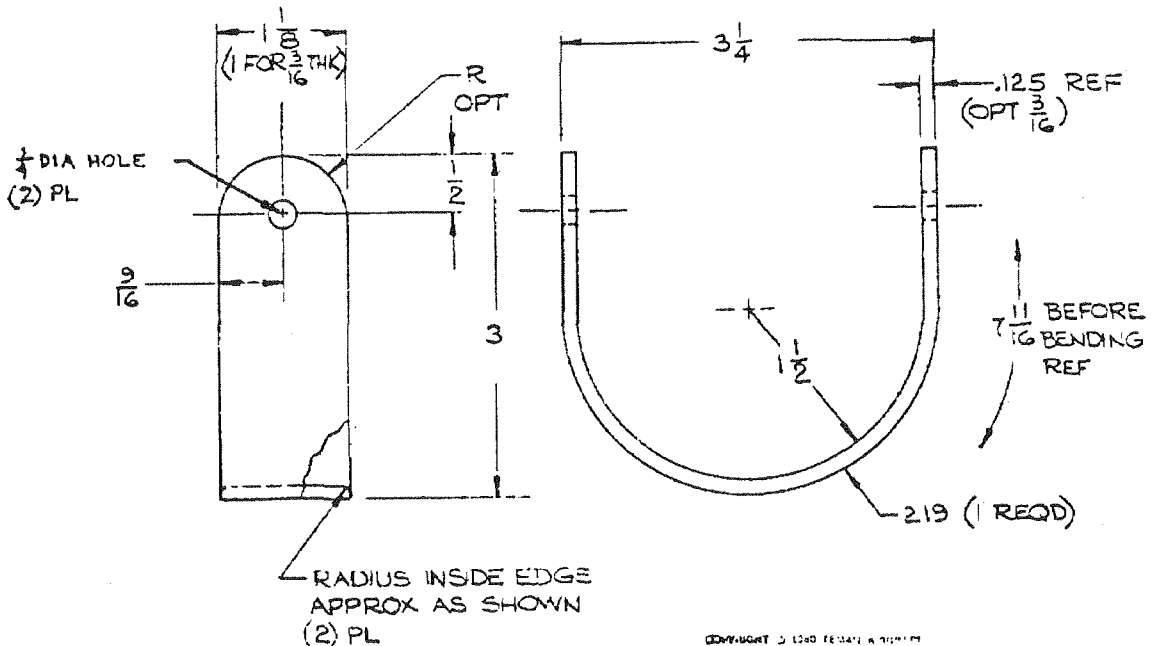


COPYRIGHT © 1980 PERMITS & RIGHTS

LDG GEAR SPACER
SCALE 1/1
RCT 5-12-80

NOTES:

1. MATL: .125 THK, 2024-T3 ALUM. OPT: $\frac{3}{16}$ THK 6061-T6 ALUM
2. QTY REQD: 1 EA



COPYRIGHT © 1980 PERMITS & RIGHTS

SHOCK BRACKET
SCALE: 1/1
RCT 12-3-80

